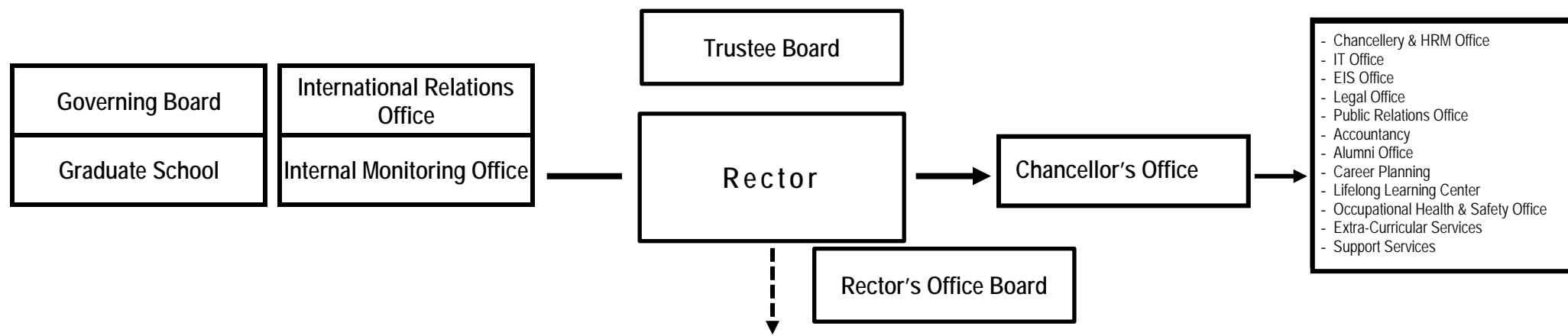




ORGANIZATIONAL CHART

MAIN UNITS



- Chancellery & HRM Office
- IT Office
- EIS Office
- Legal Office
- Public Relations Office
- Accountancy
- Alumni Office
- Career Planning
- Lifelong Learning Center
- Occupational Health & Safety Office
- Extra-Curricular Services
- Support Services

Faculty of Business and Technologies	Faculty of Social Sciences, Humanities & Education	Faculty of Law	Vice-Rector for Education and Research	Vice-Rector for Quality Enhancement
- Bachelor's Programs 1. Business Adm. (EN&GE) 2. Finance (EN&GE) 3. Marketing EN&GE 4. Management (EN&GE) 5. Accounting and Audit (EN&GE) 6. Economics (EN&GE) 7. Tourism (EN&GE) 8. Informatics (EN&GE) 9. Architecture (EN)	- Bachelor's Programs 1. International Relations (EN&GE) 2. Public Administration & Governance (GE) 3. Journalism (GE) 4. American Studies (EN) 5. English Philology (EN) - Teacher Training Educational Program (EN)	- Bachelor's Programs 1. Law (GE)	- Library - Center for International Studies - Center for Interdisciplinary Studies - Study Process Management Office - Research Projects and Innovations Office - Conferences and Publications Office	- Quality Assurance Office - Strategic Development Office
- Master's Programs 1. Finance (EN&GE) 2. Management (EN) 3. Marketing (EN) 4. Computer Science (EN) - Doctoral Programs 1. Business Administration (EN) 2. Computer Science (EN)	- Master's Programs 1. International Relations and Politics (EN) 2. Methods of ELT (EN) 3. US Foreign Affairs (EN) 4. Education Administration (EN) 5. General Education Administration (EN) 6. English Philology (EN) - Doctoral Programs 1. American Studies (EN) 2. Education Sciences (EN)	- Master's Programs 1. Corporative Commercial Law (GE)		